

# MLS Torpedo Mini-Light

“TORNAMBE TORPEDO”

## Instructions for Use

**Description:** Sutureless 25- gauge illuminator for vitreo-retinal surgery when full field illumination or bimanual surgery is desired.

**Accessories:** The Torpedo Mini-Light (Ref: **11006.000**) may be used with ophthalmic metal halide light sources such as Bausch & Lomb®'s Millennium™ surgical system or an ophthalmic xenon light source requiring an ACMI-type connector. Halogen light sources provide insufficient illumination and should not be used with these lights.

### Cautions:

**Do not use if product appears damaged. This illuminator will not provide sufficient illumination if used with Halogen light sources. Use of a light source other than those listed above may lead to product failure. Contact Insight Instruments if you intend to use a light source not listed above.**

## Directions

### Circulating Nurse:

1. Inspect package for damage. If packaging appears damaged, do not use this item.
2. Open the outer pouch and drop the Torpedo Mini-Lights onto the sterile field.

### Operating Nurse:

3. Open the inner pouch and remove fiber optic cable from spool. Hand off the connector end of the cable to circulating nurse.

### Circulating Nurse:

4. Insert the connector end of the cable into the appropriate light source.

### Operating Nurse:

5. Place fiber optic cable on patient approaching patient's eye from the chest to the chin.

### Surgeon:

6. Place your infusion cannula and instrument sclerotomies in your usual manner. Then, using a sterile 25-gauge needle, make a sclerotomy at approximately **12 o'clock hours**. Grab the Torpedo by holding the footplate (1) at the small square flange (2) with suitable forceps before completely removing the needle from the eye (Fig. 1).

7. Tape down the light fiber cable so that torpedo points towards the macula, leaving some slack so as not to create torque or pull resulting in unexpected dislocation or removal.
8. When finished with the case, remove the Torpedo by grasping with forceps or by hand and lifting straight up while supporting the sclera or conjunctiva with forceps. (Fig. 2) It may be necessary to suture the site if leakage is observed or suspected.

### Sterilization:

The Torpedo Mini-Lights are validated for single use only. After use they should be properly disposed of according to medical waste guidelines of your facility. **Do not use this item if sterile packaging appears damaged.**

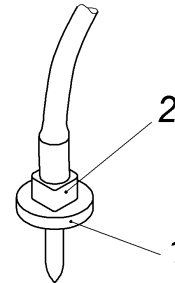


Fig. 1

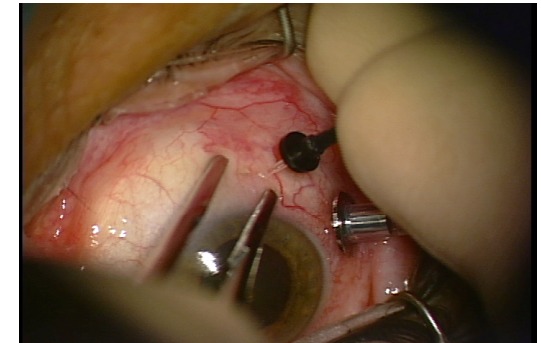
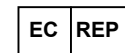


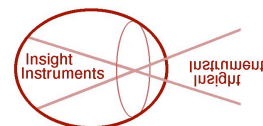
Fig. 2

## Ordering Information:

Ref: **11006.000** MLS Torpedo Mini-Light (ACMI-type connector)  
(10 per pack)



CEpartner4U, Esdoornlaan 13  
3951DB Maarn. The Netherlands.  
Tel:+31(0)6.516.536.26



**Insight Instruments, Inc.**  
P.O. Box 3239  
Stuart, FL 34995-3239, USA  
Tel (772) 219 9393  
Fax: (772) 219 9342  
[www.insightinstruments.com](http://www.insightinstruments.com)