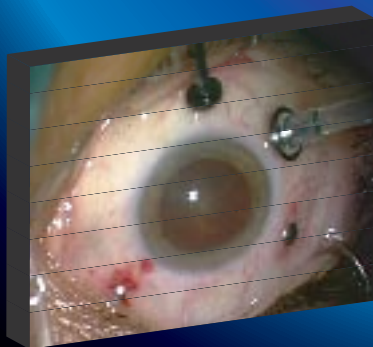
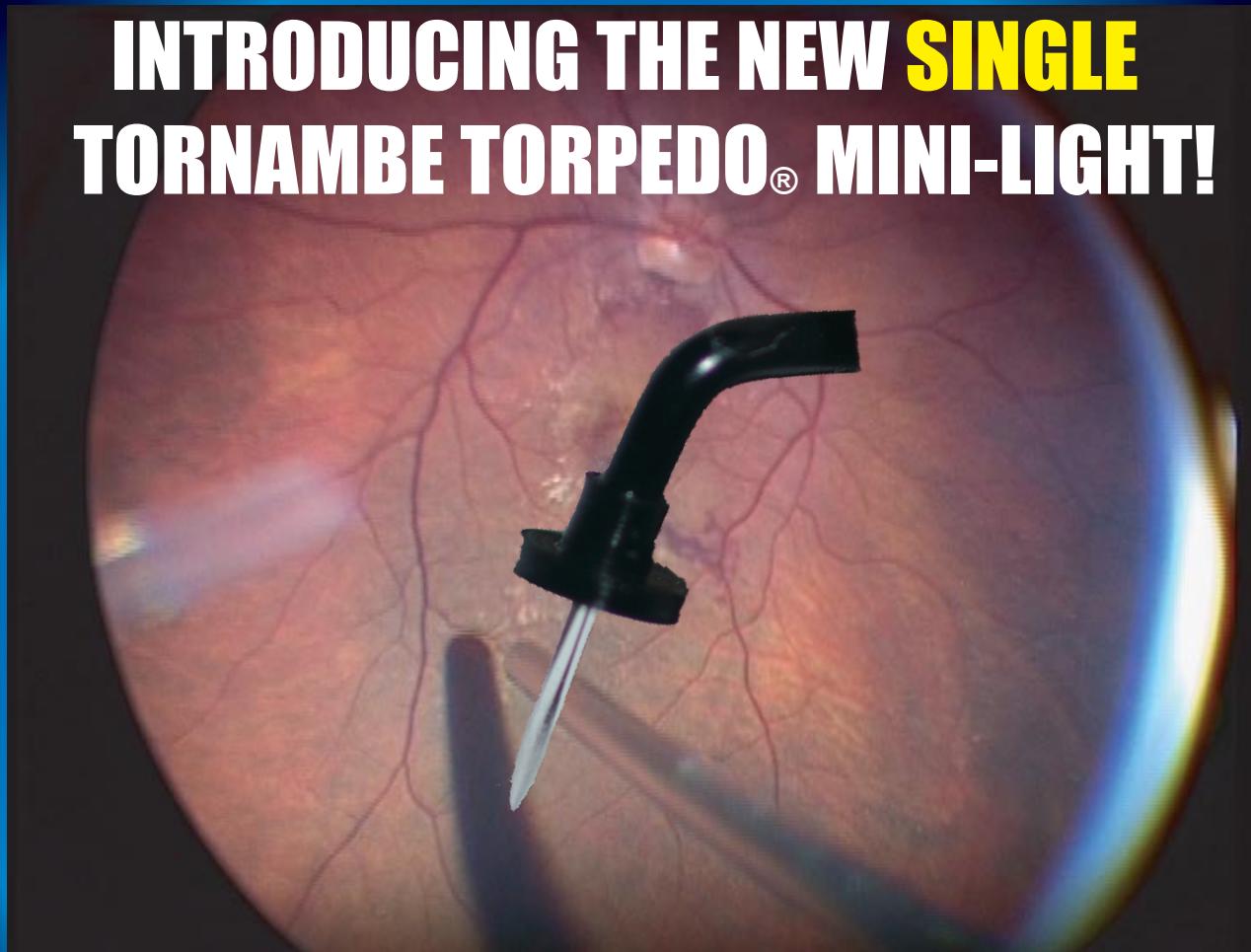


THE POWER OF ONE!

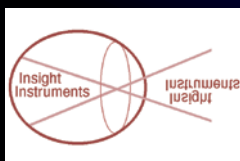
INTRODUCING THE NEW **SINGLE** TORNAMBE TORPEDO® MINI-LIGHT!



- Sutureless, plug it in and go!
- 25 Gauge sclerotomy.
- May be used with 20 ga. or 25 ga. surgery.
- Transcleral or transconjunctival insertion.

For Full-Field illumination during Bi-Manual and Wide-Angle surgery. A Metal Halide or Xenon light source is necessary to insure sufficient illumination.

Item # 11006.000



Insight Instruments, Inc. 2580 S.E. Willoughby Blvd. Stuart, FL 34994
Phone: (800)-255-8354, (772)219-9393 Fax:(772)219-9342
Web Sight: www.insightinstruments.com